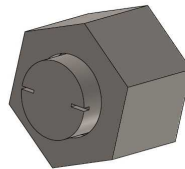
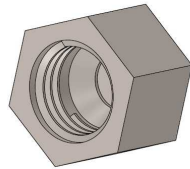
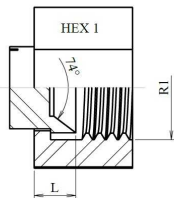


A



B

Part n°	ØD1	ØD2	R1	L	HEX 1
S13006	6	1/4	7/16" 20h UNF	10,5	14*
S13008	8	5/16	1/2" 20h UNF	12	17*
S13010	10	3/8	9/16" 18h UNF	13	19*
S13012	12	1/2	3/4" 16h UNF	14,5	24*
S13016	14-15-16	5/8	7/8" 14h UNF	15	27*
S13020	18-20	3/4	1"1/16 12h UNF	16,5	32*
S13025	25	1	1"5/16 12h UNF	17,5	41*
S13032	30-32	1 1/4	1"5/8 12h UNF	20	50*
S13038	38	1 1/2	1"7/8 12h UNF	23,8	60*

* They can be supplied with B shape